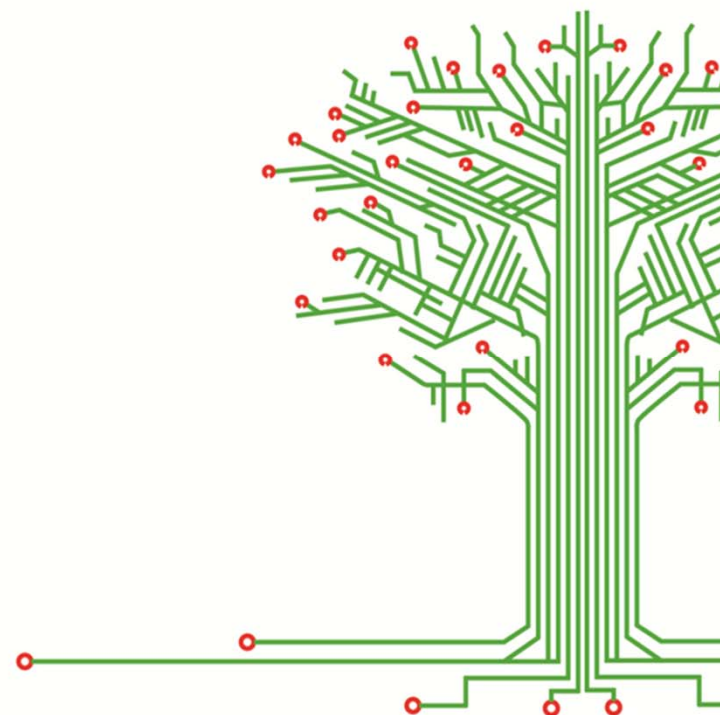




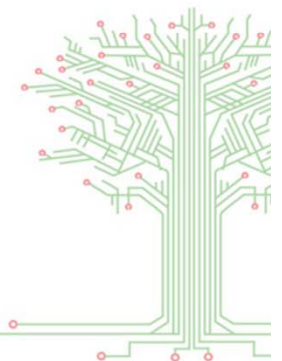
ALTERNATIVE FUEL ELECTRONICS

Petrol Gauge Emulators Technical Manual Installer Version



INDEX

- 1. Intro
- 2. AEB392
 - 2.1. AEB392 – Wiring diagram
- 3. AEB393
 - 3.1. AEB393 – Wiring diagram
- 4. AEB393H
 - 4.1. AEB393H – Wiring diagram
- 5. 628128000
 - 5.1 628128000 – Wiring diagram
- 6. 628450000
 - 6.1 628450000 – Wiring diagram



1. Intro

The petrol gauge emulator are devices that must be install on the cars that during work on gas decrease the petrol indicator level and if you switch of the car and restart it they don't show the correct one.

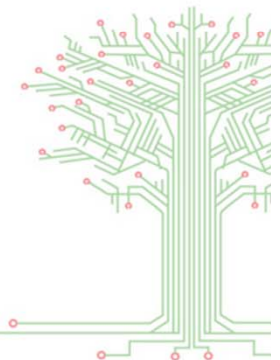
They reset the level indicator when you switch of and restart the car.

How can you understand on which car do you need to use them?

- Check that the car decrease the petrol level and if you switch of the car and restart it they don't show the correct one.
- Check in the emulator list.

We have many kind of petrol gauge emulators:

- AEB392
- AEB393
- AEB393H
- 628128000
- 628450000



2. AEB392

The AEB392 is a petrol gauge emulator that it's used on many kind of car and emulate when you switch of the car.

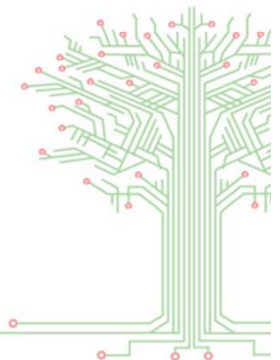
The Citroen/Peugeot car need this emulator but not some car in the following list had this kind of problem in according of the updating of the petrol Ecu and we have used this emulator.

This kind of connector have 4 wires:

Big section wire	=	+12V Pump
Big section wire	=	Ground pump
Small section wire	=	Gauge ground
Small section wire	=	Gauge signal

The gauge have a ground and one signal.

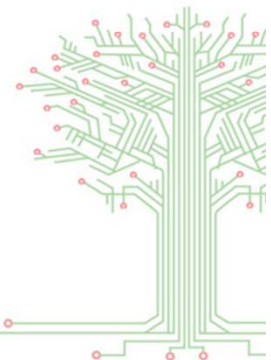
This kind of car can have 5 wires on the petrol pump connector but if you check on the pump connector you can see that the pump have only 4 pin so check the signal position related to the pin present in the pump.



2. AEB392

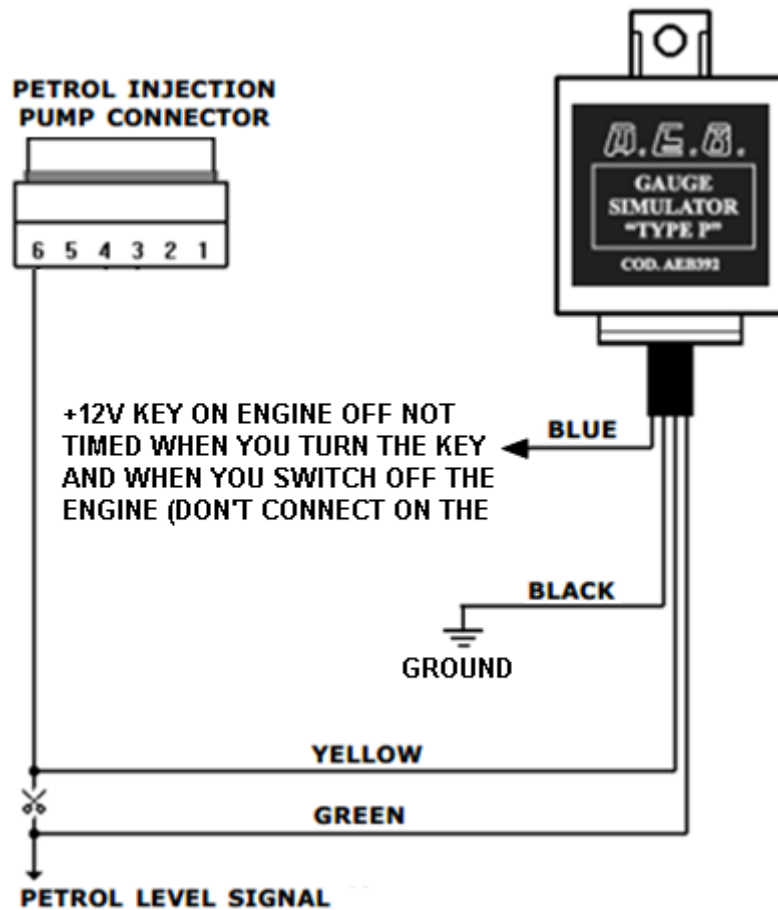
Cars list where is possible to install this emulator if the petrol level indicator decrease when the car works on gas:

- Citroen/Peugeot build before the 2008 with connection OBD Type 1-2-3
 - Type 1 = ISO9141
 - Type 2 = KWP2000 Fast Init
 - Type 3 = KWP2000 Slow Init
- Renault all models exept Twingo
- Mercedes
- Opel
- Lexus IS200, RX300
- Fiat

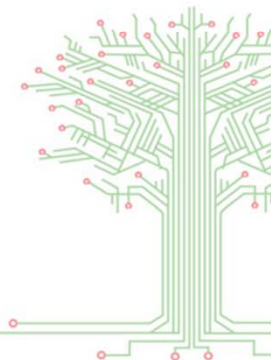


2.1. AEB392 – Wiring diagram

Wiring diagram and principle of operation:



Any Installation Different than the above description must be discuss and allowed by AEB Technical Department



3. AEB393

The AEB393 is a petrol gauge emulator that it's be used on the Citroen/Peugeot car build after 2008 with OBD connection type 6-7-8-9 Can Bus not valvetronic.

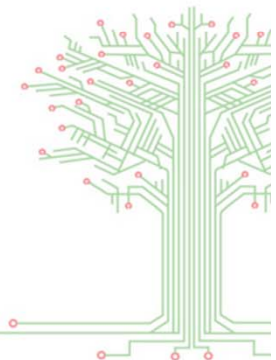
This kind of connector have 4 wires:

Big section wire	=	+12V Pump
Big section wire	=	Ground pump
Small section wire	=	Gauge ground
Small section wire	=	Gauge signal

The gauge have one gorund and one signal.

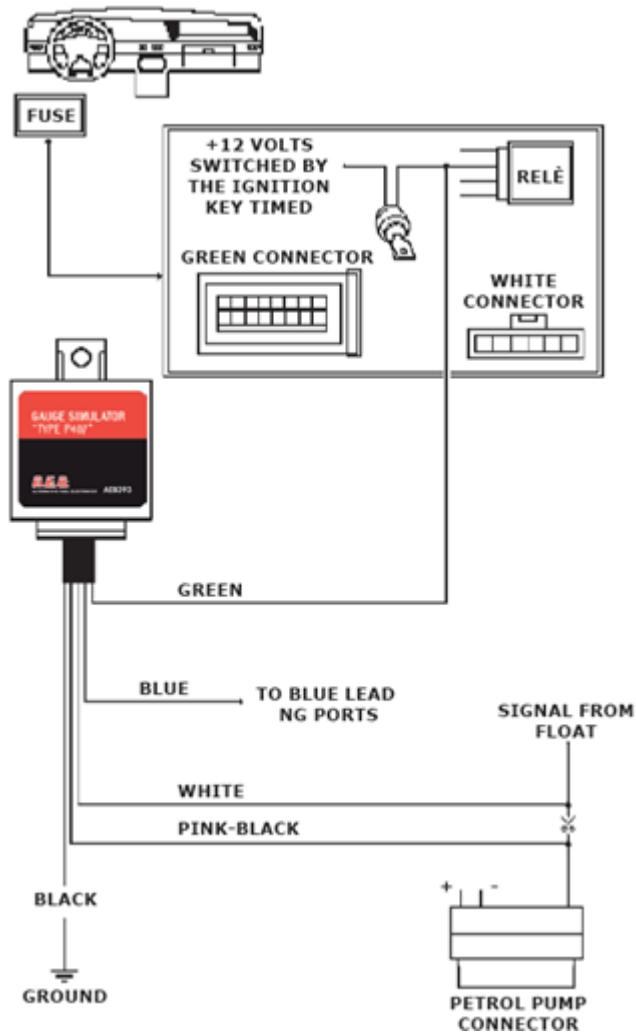
Cars list where is possible to install:

- CITROEN/PEUGEOT cars build after 2008 with OBD connection type 6-7-8-9 Can Bus not valvetronic



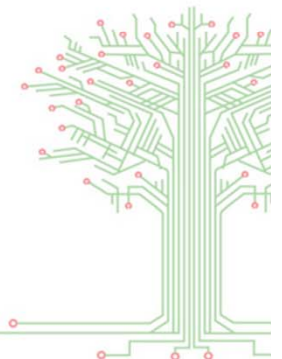
3.1. AEB393 – Wiring diagram

Wiring diagram and principle of operation:



Any Installation Different than the above description must be discuss and allowed by AEB Technical Department

AEB



4. AEB393H

The AEB393H is a petrol gauge emulator that it's used on the Honda Civic 1.8

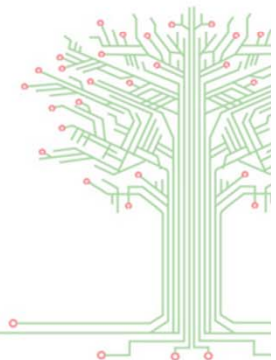
This kind of connector have 4 wires:

Big section wire	=	+12V Pump
Big section wire	=	Ground pump
Small section wire	=	Gauge ground
Small section wire	=	Gauge signal

The gauge have a ground and a signal.

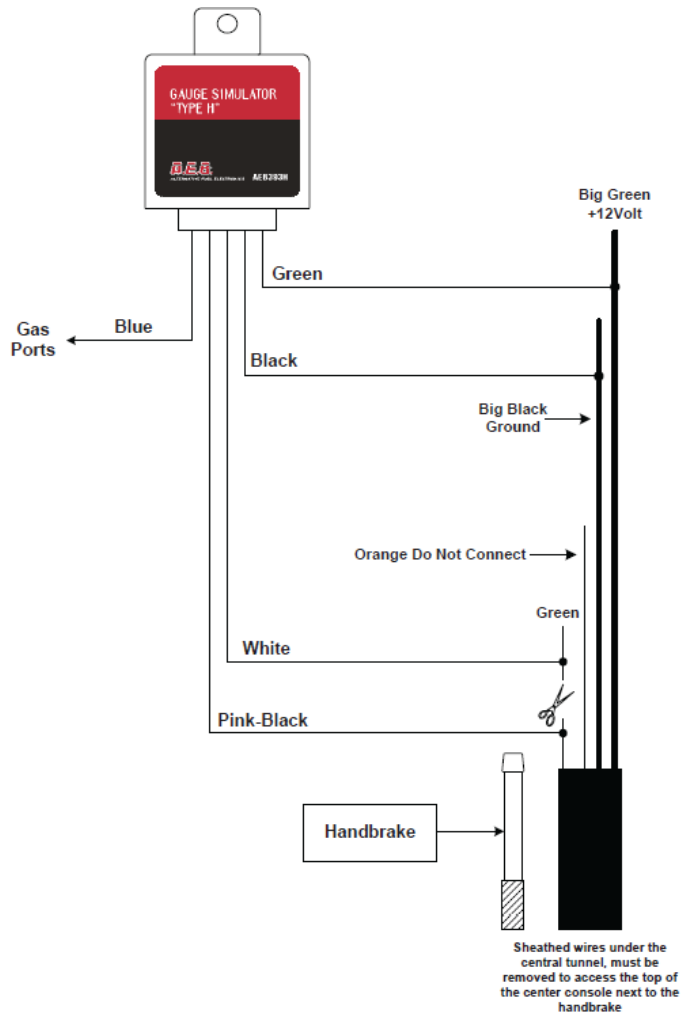
Cars list where is possible to install:

- Honda Civic 1.8

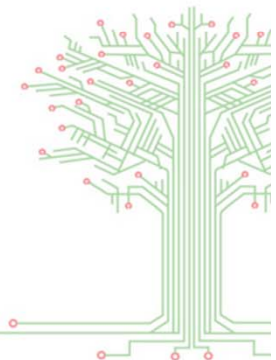


4.1. AEB393H – Wiring diagram

Wiring diagram and principle of operation:



Any Installation Different than the above description must be discuss and allowed by AEB Technical Department



5. 628128000

The 628128000 is a petrol gauge emulator that it's used on one model of Alfa Romeo.

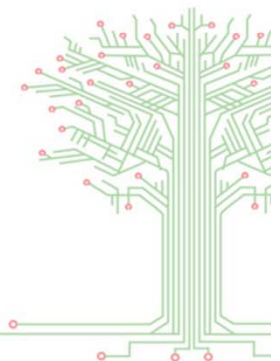
On the petrol pump connector you have 4 wires:

Big section wire =	+12V Pump
Big section wire =	Pump ground
Small section wire Pink/Violet =	+12V
Small section wire Blue/Grey =	Gauge signal

The difference between this car and the other one is that the reference of the gauge is not on the ground but on the +12V

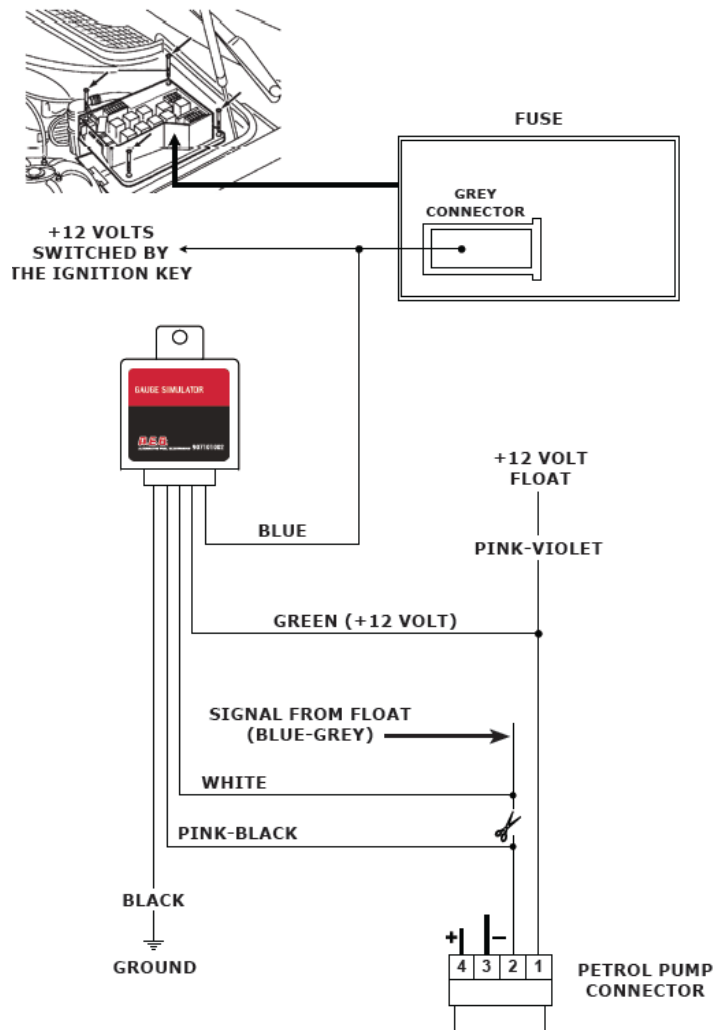
Cars list where is possible to install:

- Alfa Romeo 159 1.8 MY2007



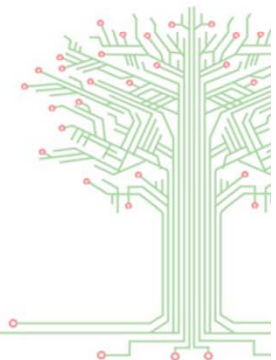
5.1. 628128000 – Wiring diagram

Wiring diagram and principle of operation:



Any Installation Different than the above description must be discuss and allowed by AEB Technical Department

AEB

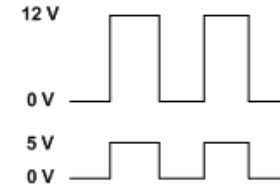


6. 628450000

The 628450000 is an emulator that it must be used on the Citroen/Peugeot Valvetronic and works also on the new Citroen/Peugeot cars that use the same strategy.

This car on the petrol pump connector have 4 wires:

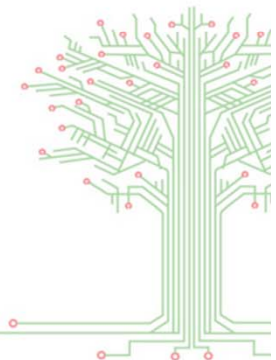
Big section wire =	+12V Pump
Big section wire =	Pump ground
Small section wire =	Gauge signal input in the pump
Small section wire =	Gauge signal output in the pump



The difference between these cars and the other one is that in this case on the petrol pump you can find two signal.

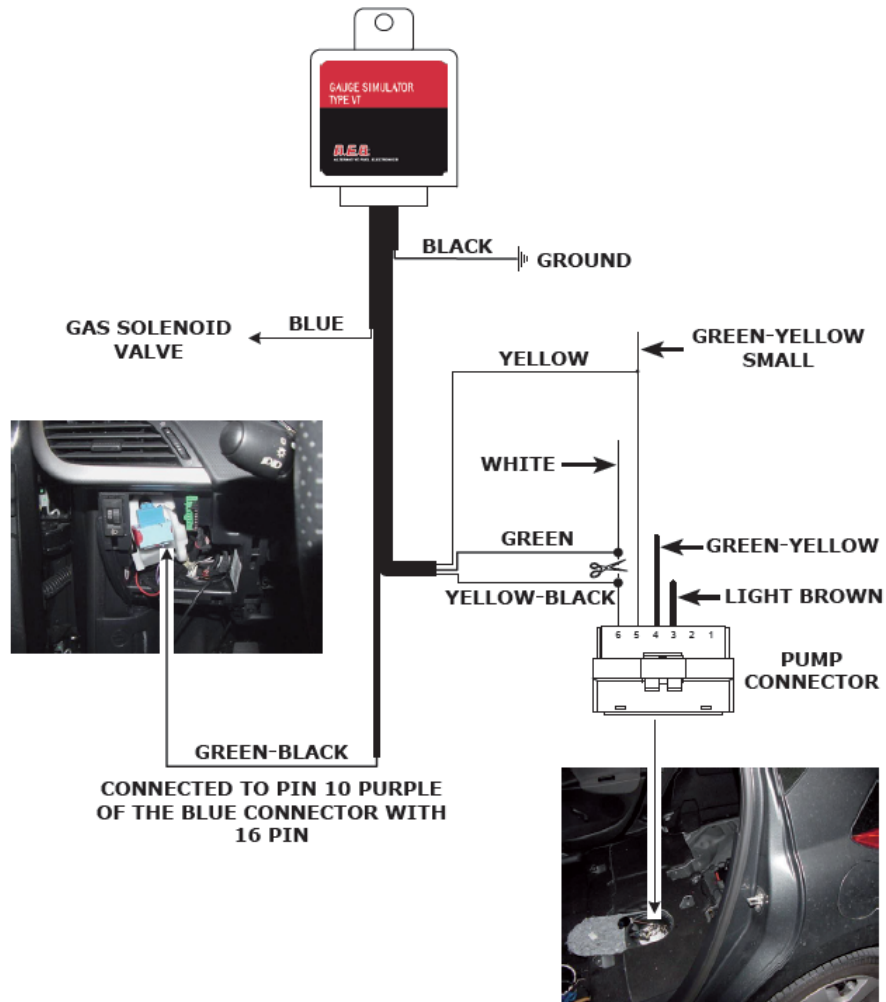
Cars list where is possible to install:

- Citroen/Peugeot Valvetronic
- Citroen/Peugeot 1.2 16v 3 Cilindri engine code HM01 MY2012



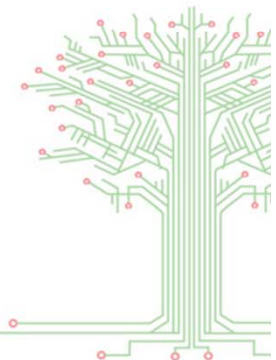
6.1. 628454000 – Wiring diagram

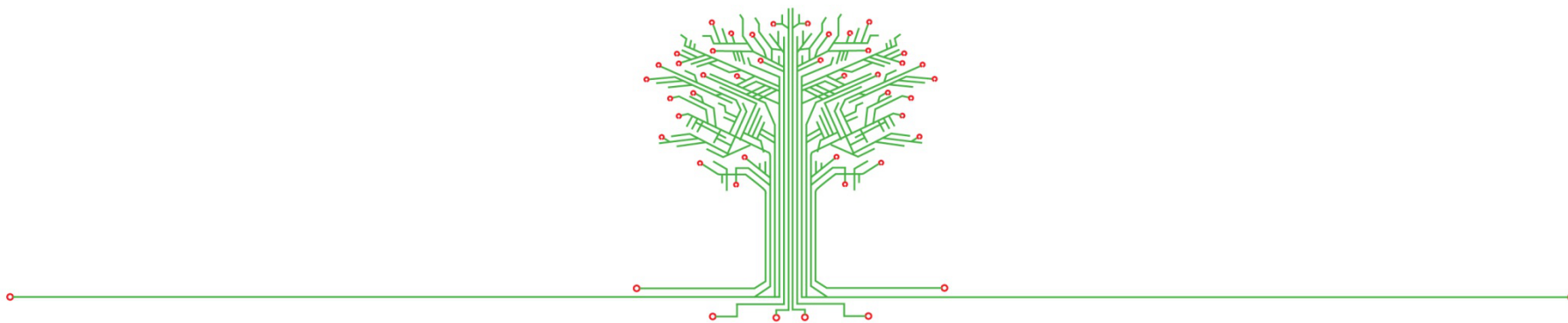
Wiring diagram and principle of operation:



Any Installation Different than the above description must be discuss and allowed by AEB Technical Department

AEB





A.E.B. S.P.A. a socio unico

Via dell' Industria 20 | 42025 Cavriago (RE) | Italia
Ph. +39 0522 494401 | fax +39 0522 494410 | info@aeb.it | www.aeb.it